

May 2019



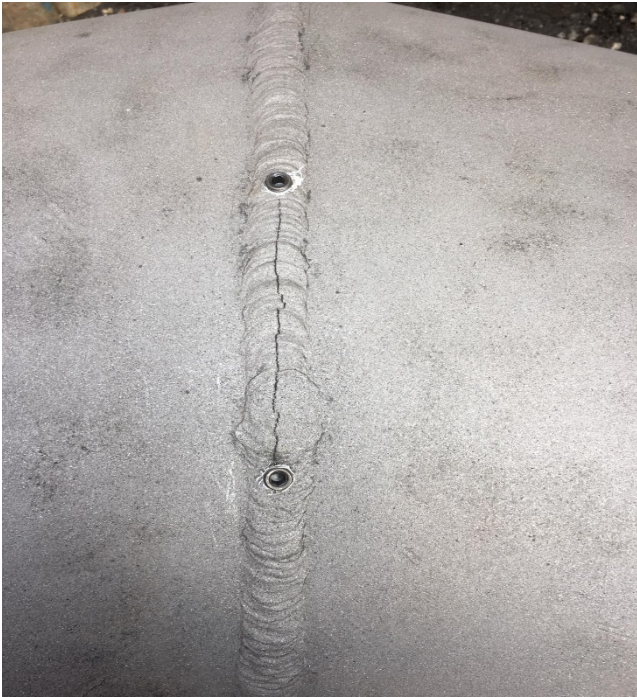
## It's All About the Response



On the afternoon of the 9<sup>th</sup> April 2019, the PLCS Technical Office received a call requesting urgent assistance in the repair of a low pressure 24" steel 90 degree welded segmented bend located in a very busy area.

Because the site was positioned at a busy city junction, time was of the essence to avoid severe traffic delays due to extended open excavation times. As a result, preparation work began early the following morning, when a PLCS Engineering Team consisting of Mark Bailey and Chris Darby was dispatched to meet with the senior site engineer to assess the damage.





To make a full evaluation of the repair, a temporary wrapping, which had been placed around the pipe, was removed. The pipe was then cleaned and, the welded joints were grit blasted. On close inspection of the area around the escape it was revealed that there was a crack in the central welded joint.

To prevent further propagation, the ends of the crack were immediately drilled and plugged, and dimensions of the three joints were quickly sent back to PLCS by email so our team could begin work on the design of special fabricated kits.

As soon as the design process was complete, details were passed to our sewing room who were then able to carry out the same day manufacture of the necessary repair kits.

Our specialist engineering team returned to the site the following morning to complete the repairs, less than 24 hours after the initial call.



**The completed repair**



\*\*\*\*\*